



# ST REGIS

BAL HARBOUR  
THE RESIDENCES

## RESIDENCE B NORTH TOWER

3 BEDROOM, 3 1/2 BATH  
FLOORS 12-27

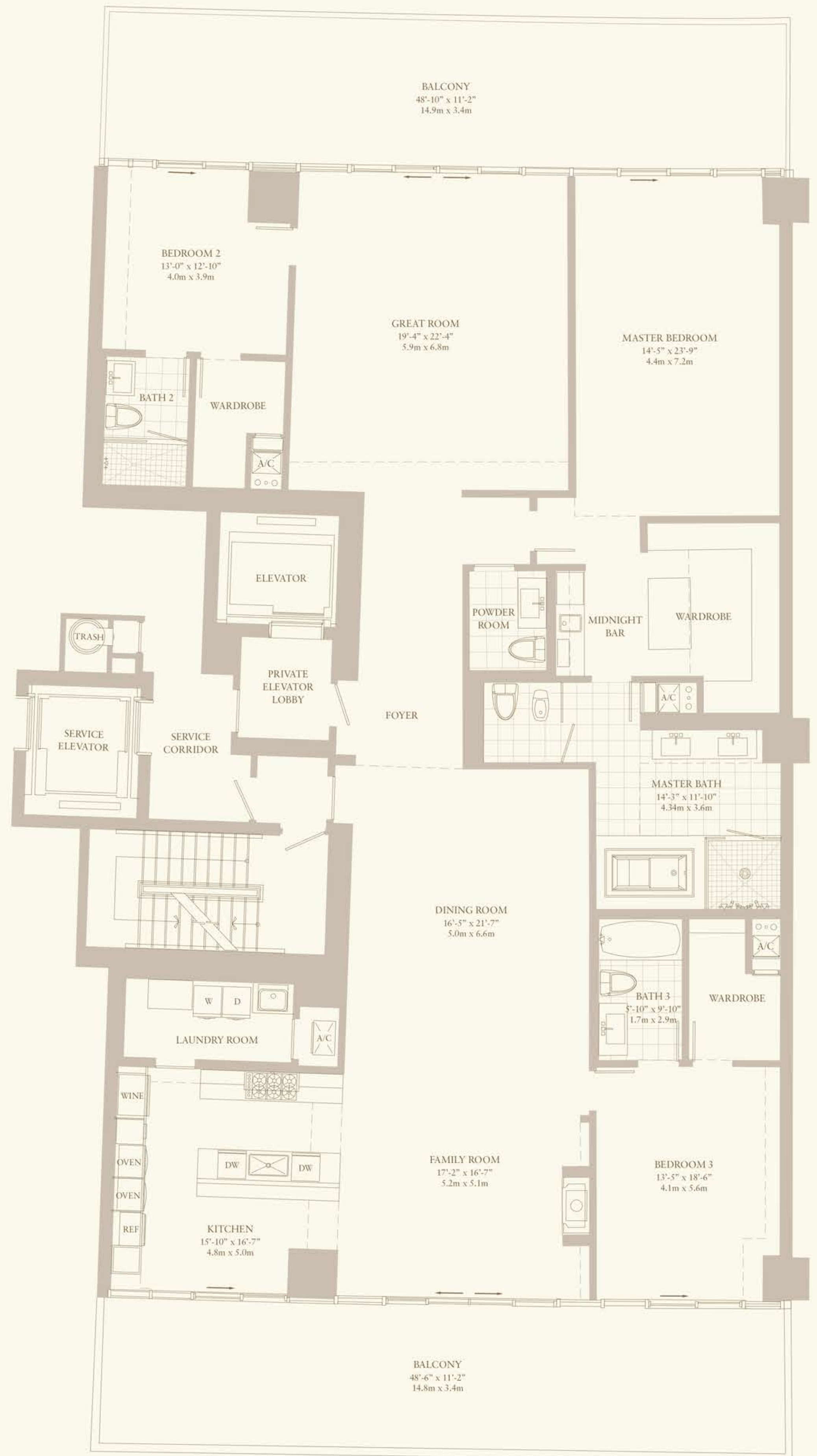
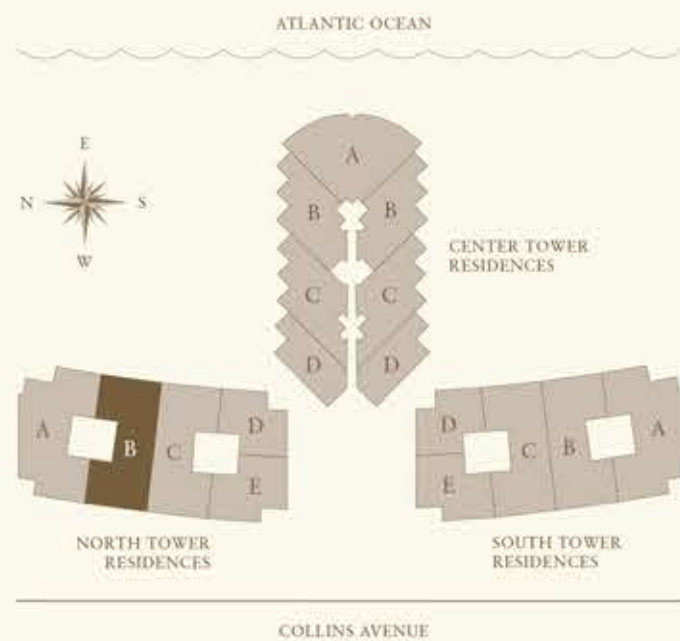
	TOTAL SQ FT	TOTAL SQ M
RESIDENCE	3,424	318.1
BALCONY	1,071	99.5
<b>TOTAL</b>	<b>4,495</b>	<b>417.6</b>

	TOTAL SQ FT	TOTAL SQ M
PAINT TO PAINT RESIDENCE	3,128	290.6



# ROSS miami

© RossMiami.com. All Rights Reserved.



The drawings herein are conceptual only and are subject to change without notice at the discretion of the developer. The developer reserves the right to make additions, deletions and modifications to the drawings as the developer may deem appropriate or desirable. Any fixtures or decorative items depicted herein are shown for artistic and illustrative purposes only and are not included in the purchase and sale of the residence. Dimensions and square footages are approximate and may vary with actual construction. All of the materials, including tile, marble, stone, granite, cabinets, wood, stain, grout, wall and ceiling textures, mirrors, are subject to size and color variations, grade and quality variations, and pattern and texture variations. If circumstances arise which, in Seller's opinion, warrant changes of suppliers, manufacturers, brand names or items, or if Seller elects to omit certain items, Seller may modify and/or make substitutions for equipment, material, appliances, etc., with items, which in Seller's opinion are of equal or better quality (regardless of cost), and (iv) Seller has the right to substitute or change materials and/or stain colors utilized in wood floor (if any).

Stated dimensions are measured to the exterior boundaries of the exterior walls and the center line of interior dividing walls and, in fact, vary from the dimensions that would be determined by using the description and definition of the "wall" set forth in the declaration (which generally only includes the interior corners between the perimeter walls and excludes exterior structural components additionally, measurements of rooms set forth on any floor plan are generally taken at the greatest points of such given room (as if the room were a perfect rectangle), without regard for any cut outs accordingly, the area of the actual room will typically be smaller than the product obtained by multiplying the stated length times width. All dimensions are approximate and all floor plans and development plans are subject to change.

©2010 Starwood Hotels & Resorts Worldwide, Inc. All Rights Reserved. Our representations cannot be relied upon as accurately stating representations of the developer. For correct representations, make reference to the documents required by section 718.503, Florida Statute, to be furnished by a developer to a buyer or lessee. Certain units in this condominium are subject to restrictive covenants. Obtain the property report required by federal law and read it before signing anything. No federal agency has judged the merits or value, if any, of this property this offering is made only by the prospectus for the condominium and no statement should be relied upon if not made in the prospectus. Not an offering where prohibited by state law. The developer's use of the St. Regis® trademarks is pursuant to a license from the Sheraton LLC. The complete offering terms are in a offering plan available from the sponsor file no. 07-0294

