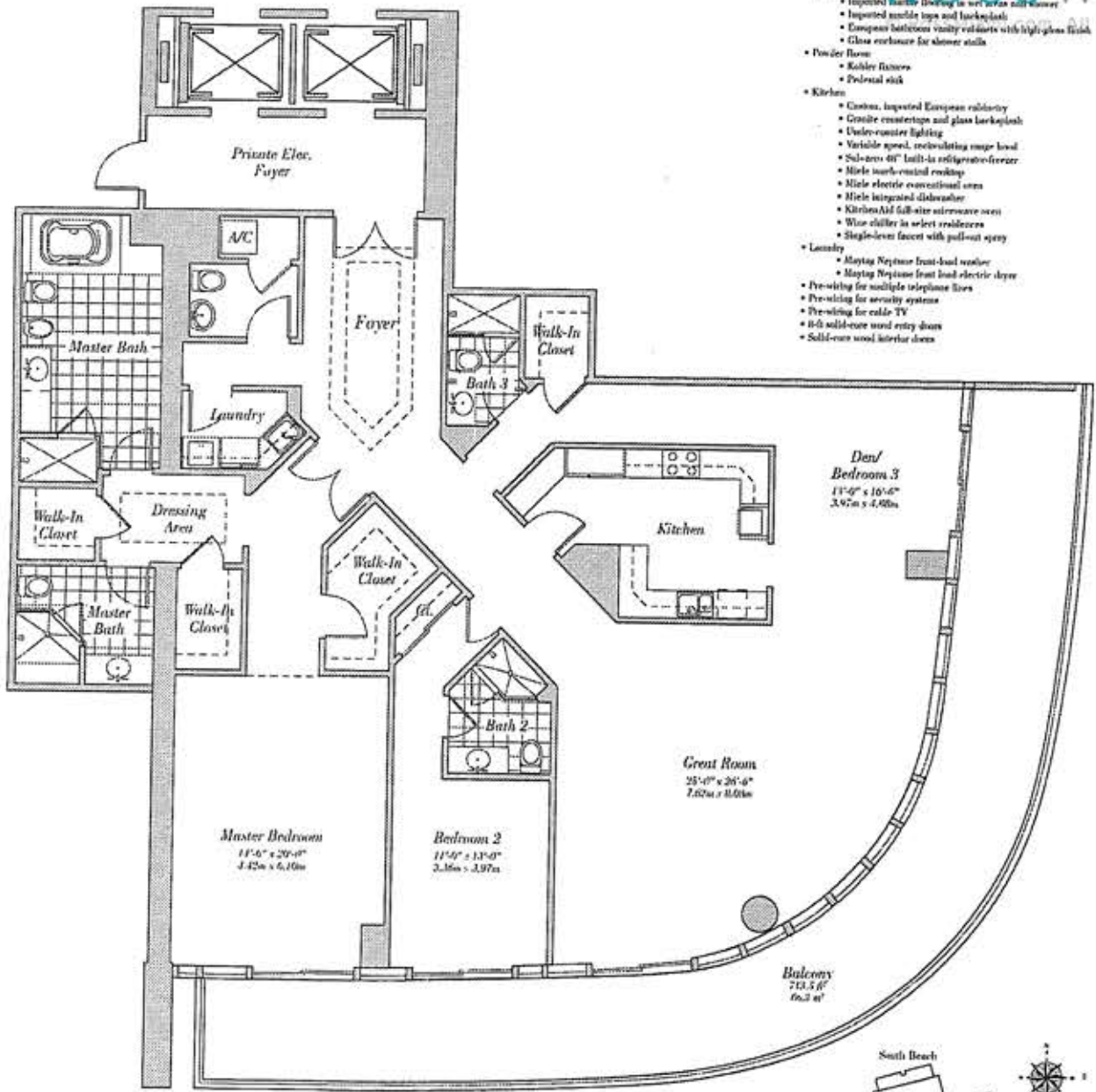


# Residence 26

Floors 27-29

2 Bedroom, 1 Den/Bedroom, 4 Bath, Powder Room  
2,847 s.f. 264.6 m<sup>2</sup>

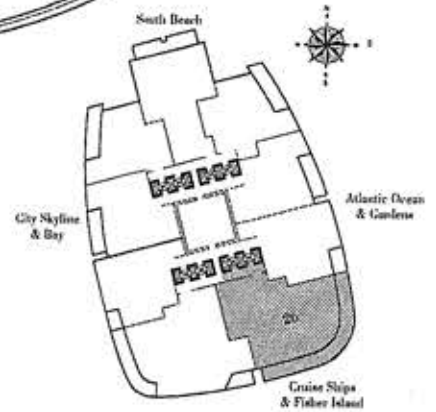


## Residence Features

- 10' ceilings
- Private, covered balconies with glass railings
- Floor-to-ceiling sliding glass doors to balconies with tinted, thermal glass
- Designed to meet hurricane standards of the South Florida Building Code
- Master Bathroom
  - Imported marble counter tops, backsplash, and vanity
  - Imported marble flooring in wet areas and shower
  - Kohler fixtures
  - Whirlpool tub with waterfall spout
  - European bathroom vanity cabinets with high-gloss finish
  - Seamless glass shower doors
  - Full length mirror
- Second Bathroom
  - Imported marble flooring in wet areas and shower
  - Imported marble tops and backsplash
  - European bathroom vanity cabinets with high-gloss finish
  - Glass enclosure for shower stalls
- Powder Room
  - Kohler fixtures
  - Porcelain sink
- Kitchen
  - Custom, imported European cabinetry
  - Granite countertops and glass backsplash
  - Under-cabinet lighting
  - Variable speed, recirculating range hood
  - Sub-zero 40" built-in refrigerator-freezer
  - Marble marble-venetian countertop
  - Marble electric conventional oven
  - Marble integrated dishwasher
  - KitchenAid full-size microwave oven
  - Wine chiller in wet bar area
  - Single-lever faucet with pull-out spray
- Laundry
  - Maytag Neptune front-load washer
  - Maytag Neptune front-load electric dryer
- Pre-wiring for multiple telephone lines
- Pre-wiring for security systems
- Pre-wiring for cable TV
- 6-6 solid-core wood entry doors
- Solid-core wood interior doors

ROSS miami  
rossmiami.com All Rights Reserved.

CONTINUUM  
ON SOUTH BEACH



ROSS miami

© RossMiami.com. All Rights Reserved.